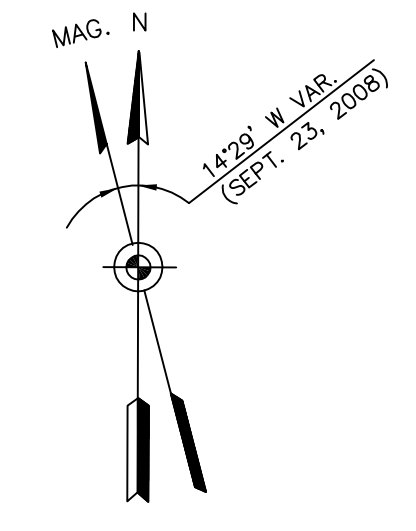
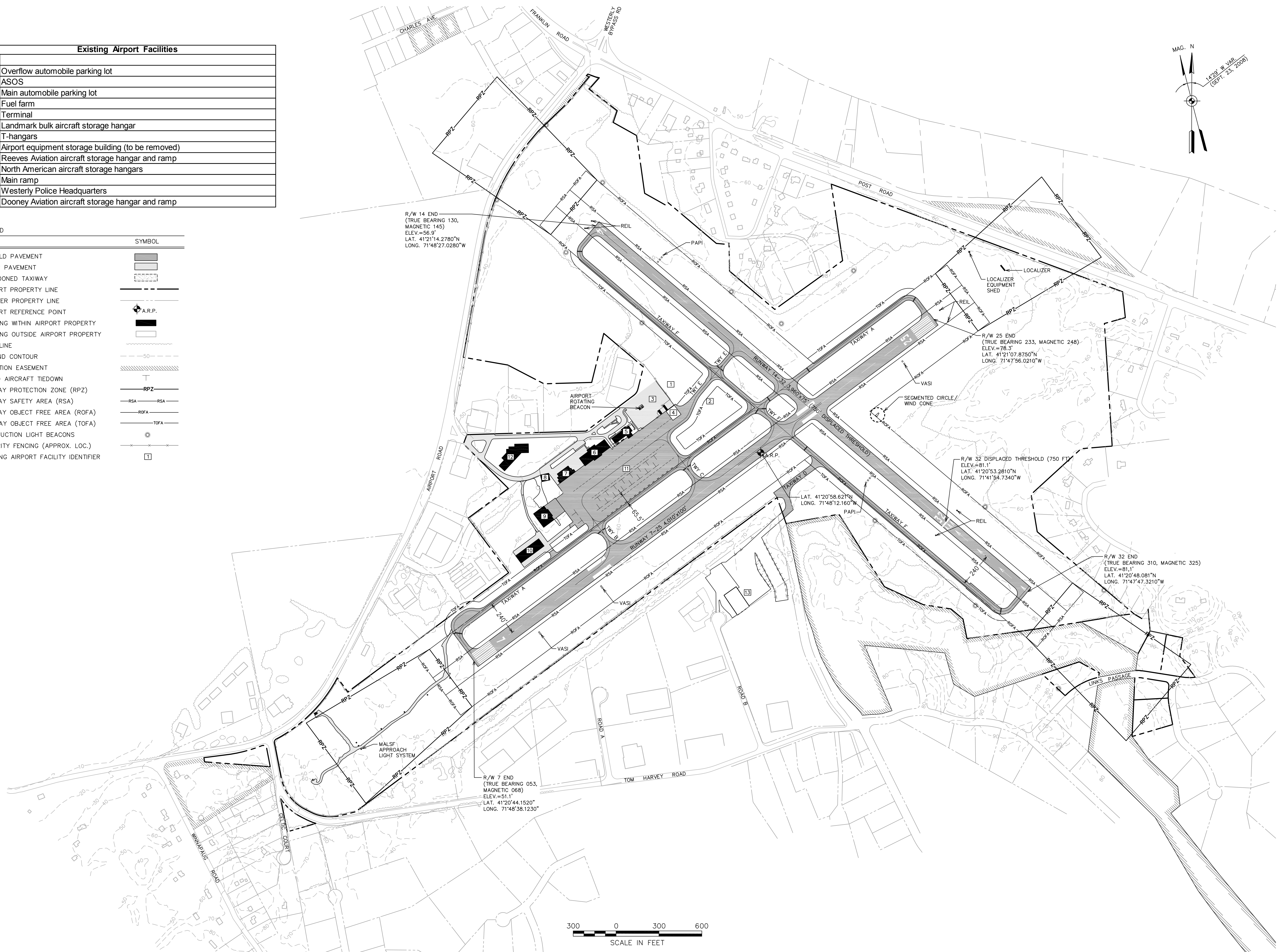


Existing Airport Facilities	
No.	
1	Overflow automobile parking lot
2	ASOS
3	Main automobile parking lot
4	Fuel farm
5	Terminal
6	Landmark bulk aircraft storage hangar
7	T-hangars
8	Airport equipment storage building (to be removed)
9	Reeves Aviation aircraft storage hangar and ramp
10	North American aircraft storage hangars
11	Main ramp
12	Westerly Police Headquarters
13	Dooney Aviation aircraft storage hangar and ramp

ITEM	SYMBOL
AIRFIELD PAVEMENT	
OTHER PAVEMENT	
ABANDONED TAXIWAY	
AIRPORT PROPERTY LINE	
ABUTTER PROPERTY LINE	
AIRPORT REFERENCE POINT	
BUILDING WITHIN AIRPORT PROPERTY	
BUILDING OUTSIDE AIRPORT PROPERTY	
TREE LINE	
GROUND CONTOUR	
AVIGATION EASEMENT	
PAVED AIRCRAFT TIEDOWN	
RUNWAY PROTECTION ZONE (RPZ)	
RUNWAY SAFETY AREA (RSA)	
RUNWAY OBJECT FREE AREA (ROFA)	
TAXIWAY OBJECT FREE AREA (TOFA)	
OBSTRUCTION LIGHT BEACONS	
SECURITY FENCING (APPROX. LOC.)	
EXISTING AIRPORT FACILITY IDENTIFIER	



ENGINEER/ARCHITECT	
PROJECT NO.	72088.01
FILE NAME	72088-EX-ALP
DES. BY	BJS
DR. BY	WHH
CHKD. BY	BJS
DATE	APRIL 24, 2009
SCALE	AS SHOWN
<b>Vanasse Hangen Brustlin, Inc.</b> Transportation Land Development Environmental Services 101 Walnut Street, P.O. Box 9151 Waterbury, Massachusetts 02471 617.924.1770 • FAX 617.924.2286	
<b>WESTERLY STATE AIRPORT WESTERLY, RHODE ISLAND EXISTING AIRPORT FACILITIES PLAN</b>	
DRAWING NO.	1
SHEET	1 OF 7