

| EASEMENT AND OBSTRUCTION CLEARING / LIGHTING REQUIREMENTS |   |     |   |
|---|---|-----|---|
| DESCRIPTION   | EXISTING CONDITIONS   | KEY | REQUIRED TO MEET STANDARDS  |
| Runway 7 approach surfaces                                | Tree obstructions within Obstacle Clearance Surface (for 3.6 degree VAS)  | 1   | Obtain easement and clear obstructions (trees)                                  |
|   |   | 2   | Obtain easement and clear obstructions (trees)                                  |
|   |   | 3   | Obtain easement and clear obstructions (trees)                                  |
|   |   | 4   | Obtain easement and clear obstructions (trees)                                  |
|   |   | 5   | Obtain easement and clear obstructions (trees)                                  |
|   |   | 6   | Obtain easement and clear obstructions (trees)                                  |
|   |   | 7   | Obtain easement and clear obstructions (trees)                                  |
| Water tower within Transitional Surface                   | n/a   | 15  | Install obstruction light in area where trees are to remain                     |
|   |   | 16  | Install obstruction light in area where trees are to remain                     |
| Runway 25 approach surface                                | Tree obstructions within Obstacle Clearance Surface (for 3.0 degree VAS)  | 8   | Obtain easement and clear obstructions (trees)                                  |
|   |   |     |   |
| Runway 14 approach surface                                | Tree obstructions within Obstacle Clearance Surface (for 4.0 degree PAPI) | 12  | Obtain easement and clear obstructions (trees)                                  |
|   |   | 13  | Obtain easement and clear obstructions (trees)                                  |
|   |   | 14  | Obtain easement and clear obstructions (trees)                                  |
|   |   | 15  | Obtain easement and clear obstructions (trees)                                  |
| Runway 32 approach surfaces                               | Residential property within Runway Protection Zone (RPZ)                  | 9   | Obtain fee simple purchase of residential property; clear and maintain property |
|   |   | 11  | Obtain easement and clear obstructions (trees)                                  |
|   |   | 14  | Install obstruction light in area where trees are to remain                     |

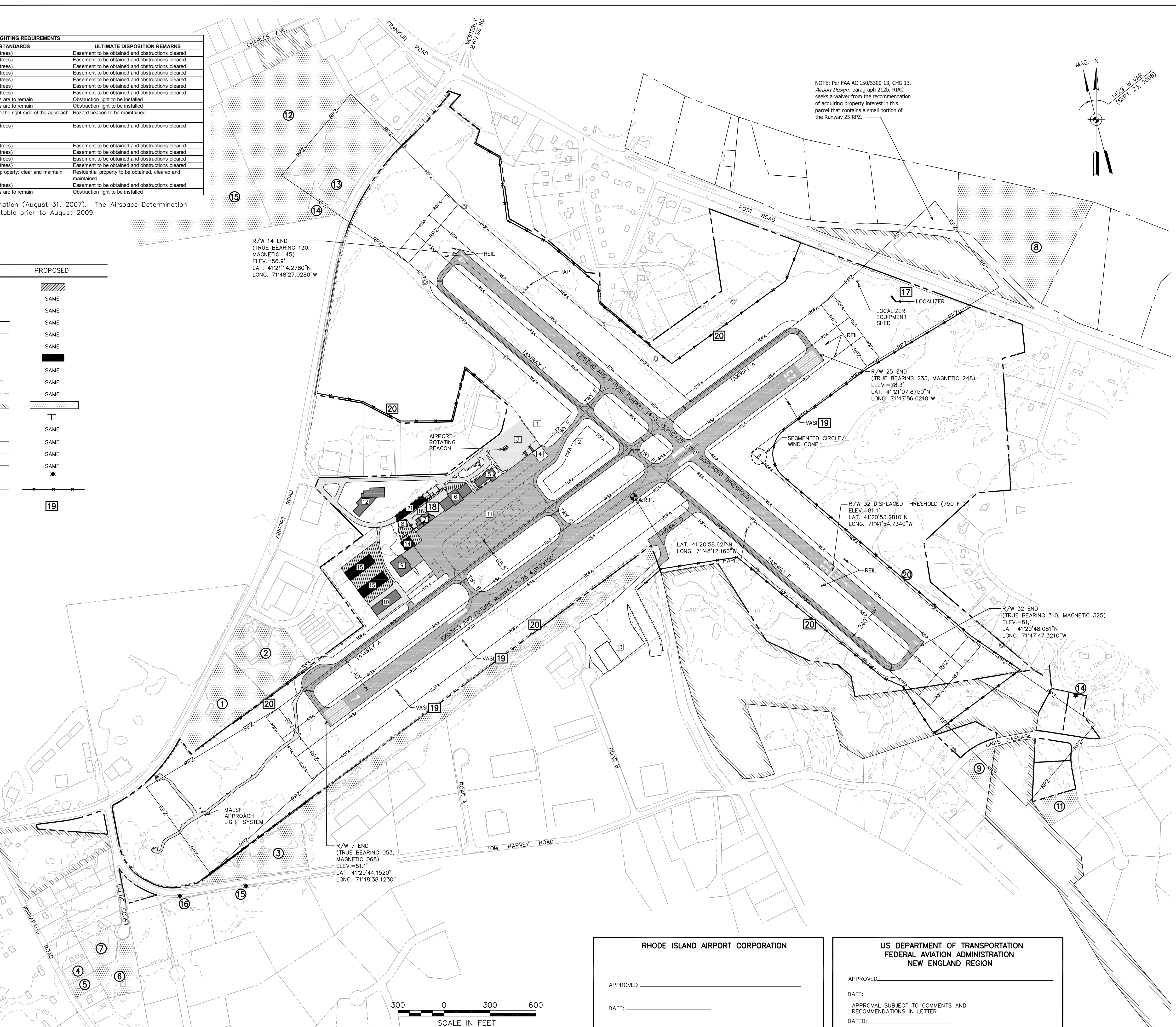
These non-conforming conditions are based on an FAA Airspace Determination (August 31, 2007). The Airspace Determination requires the airport sponsor (RIAC) to take the actions identified in this table prior to August 2009.

LEGEND

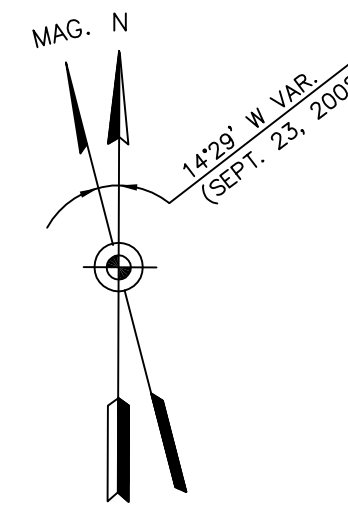
| ITEM                                 | EXISTING | PROPOSED |
|--------------------------------------|----------|----------|
| AIRFIELD PAVEMENT                    | [Symbol] | [Symbol] |
| OTHER PAVEMENT                       | [Symbol] | [Symbol] |
| ABANDONED TAXIWAY                    | [Symbol] | [Symbol] |
| AIRPORT PROPERTY LINE                | [Symbol] | [Symbol] |
| ABUTTER PROPERTY LINE                | [Symbol] | [Symbol] |
| AIRPORT REFERENCE POINT              | [Symbol] | [Symbol] |
| BUILDING WITHIN AIRPORT PROPERTY     | [Symbol] | [Symbol] |
| BUILDING OUTSIDE AIRPORT PROPERTY    | [Symbol] | [Symbol] |
| TREE LINE                            | [Symbol] | [Symbol] |
| GROUND CONTOUR                       | [Symbol] | [Symbol] |
| AVIGATION EASEMENT                   | [Symbol] | [Symbol] |
| PAVED AIRCRAFT TIEDOWN               | [Symbol] | [Symbol] |
| RUNWAY PROTECTION ZONE (RPZ)         | [Symbol] | [Symbol] |
| RUNWAY SAFETY AREA (RSA)             | [Symbol] | [Symbol] |
| RUNWAY OBJECT FREE AREA (ROFA)       | [Symbol] | [Symbol] |
| TAXIWAY OBJECT FREE AREA (TOFA)      | [Symbol] | [Symbol] |
| OBSTRUCTION LIGHT BEACONS            | [Symbol] | [Symbol] |
| SECURITY FENCING (APPROX. LOC.)      | [Symbol] | [Symbol] |
| EXISTING AIRPORT FACILITY IDENTIFIER | [Symbol] | [Symbol] |

Existing & Proposed Airport Facilities

| No. | Description  |
|-----|--|
| 1   | Overflow automobile parking lot  |
| 2   | ASOS   |
| 3   | Main automobile parking lot  |
| 4   | Fuel farm  |
| 5   | Terminal   |
| 6   | Landmark bulk aircraft storage hangar                                    |
| 7   | T-hangers  |
| 8   | Airport equipment storage building (to be removed)                       |
| 9   | Reeves Aviation aircraft storage hangar and ramp                         |
| 10  | North American aircraft storage hangars                                  |
| 11  | Main ramp  |
| 12  | Westerly Police Headquarters   |
| 13  | Dooney Aviation aircraft storage hangar and ramp                         |
| 14  | Proposed snow removal and maintenance equipment storage facility         |
| 15  | Proposed hangars (private development)                                   |
| 16  | Proposed tie-downs   |
| 17  | Proposed evaluation of GPS approach to Runway 25                         |
| 18  | Proposed reconstruction, redesign and pavement addition to the Main Ramp |
| 19  | Proposed replacement of VASI systems with PAPI systems for Runway 7-25   |
| 20  | Proposed security fence installation                                     |
| 21  | Proposed relocated T-hangers   |



NOTE: Per FAA AC 150/5300-13, CHG 13, Airport Design, paragraph 2120, RIAC seeks a waiver from the recommendation of acquiring property interest in this parcel that contains a small portion of the Runway 25 RPZ.



RHODE ISLAND AIRPORT CORPORATION  
 APPROVED \_\_\_\_\_  
 DATE: \_\_\_\_\_

US DEPARTMENT OF TRANSPORTATION  
 FEDERAL AVIATION ADMINISTRATION  
 NEW ENGLAND REGION  
 APPROVED \_\_\_\_\_  
 DATE: \_\_\_\_\_  
 APPROVAL SUBJECT TO COMMENTS AND RECOMMENDATIONS IN LETTER  
 DATED: \_\_\_\_\_

PROJECT NO. 72088.01  
 FILE NAME 72088-PR-ALP

**Vanasse Hangen Brustlin, Inc.**  
 Transportation  
 Land Development  
 Environmental Services  
 101 Walnut Street, P.O. Box 9151  
 Watertown, Massachusetts 02471  
 617.924.1770 • FAX 617.924.2286



WESTERLY STATE AIRPORT  
 WESTERLY, RHODE ISLAND  
 AIRPORT LAYOUT PLAN

DRAWING NO. 2  
 SHEET 2 OF 7