

REV.	DESCRIPTION	DATE

PROJECT NO.	FILE NAME
72088.01	72088-ASP

PROJECT NO. 72088.01	FILE NAME 72088-ASP
-------------------------	------------------------

**Yanase Hengen Brustlin, Inc.**  
 Transportation  
 Land Development  
 Environmental Services  
 101 Walnut Street, P.O. Box 9151  
 Watertown, Massachusetts 02471  
 617.924.1770 • FAX 617.924.2286



WESTERLY STATE AIRPORT  
 WESTERLY, RHODE ISLAND  
**VEGETATIVE OBSTRUCTION  
 CLEARING AND LIGHTING PLAN**  
 FOR REVISED AERONAUTICAL STUDY REQUEST

DRAWING NO.

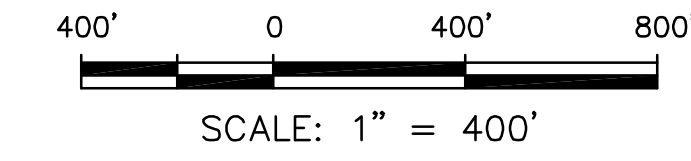
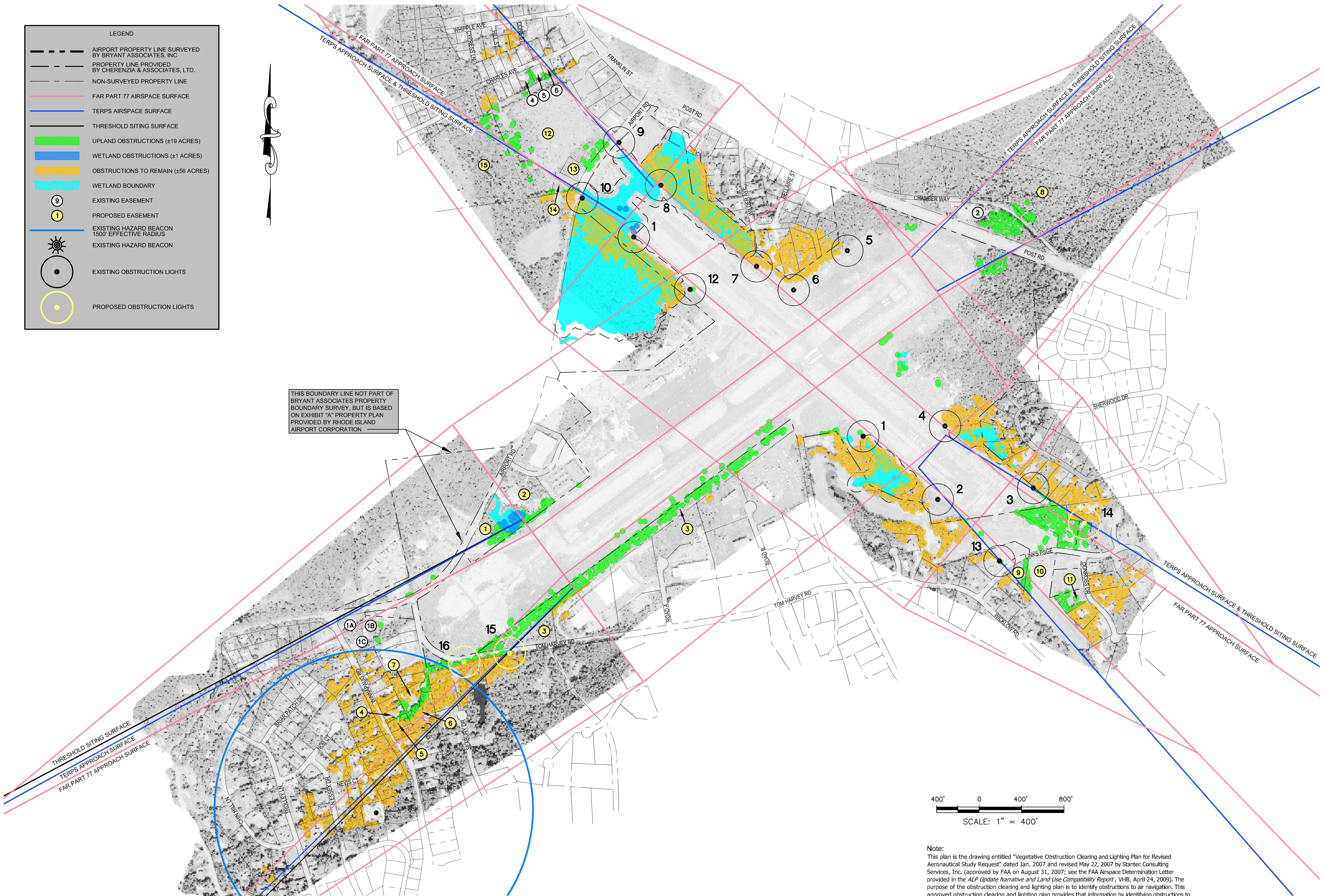
6

**LEGEND**

- AIRPORT PROPERTY LINE SURVEYED BY BRYANT ASSOCIATES, INC.
- PROPERTY LINE PROVIDED BY CHERENZIA & ASSOCIATES, L.T.D.
- NON-SURVEYED PROPERTY LINE
- FAR PART 77 AIRSPACE SURFACE
- TERPS AIRSPACE SURFACE
- THRESHOLD SITING SURFACE
- UPLAND OBSTRUCTIONS (±19 ACRES)
- WETLAND OBSTRUCTIONS (±1 ACRES)
- OBSTRUCTIONS TO REMAIN (±56 ACRES)
- WETLAND BOUNDARY
- EXISTING EASEMENT
- PROPOSED EASEMENT
- EXISTING HAZARD BEACON 1500' EFFECTIVE RADIUS
- EXISTING HAZARD BEACON
- EXISTING OBSTRUCTION LIGHTS
- PROPOSED OBSTRUCTION LIGHTS



THIS BOUNDARY LINE NOT PART OF BRYANT ASSOCIATES PROPERTY BOUNDARY SURVEY, BUT IS BASED ON EXHIBIT "A" PROPERTY PLAN PROVIDED BY RHODE ISLAND AIRPORT CORPORATION



**Note:**  
 This plan is the drawing entitled "Vegetative Obstruction Clearing and Lighting Plan for Revised Aeronautical Study Request" dated Jan. 2007 and revised May 22, 2007 by Stantec Consulting Services, Inc. (approved by FAA on August 31, 2007; see the FAA Airspace Determination Letter provided in the *ALP Update Narrative and Land Use Compatibility Report*, VHB, April 24, 2009). The purpose of the obstruction clearing and lighting plan is to identify obstructions to air navigation. This approved obstruction clearing and lighting plan provides that information by identifying obstructions to the Part 77, TERPS and threshold siting surfaces.